

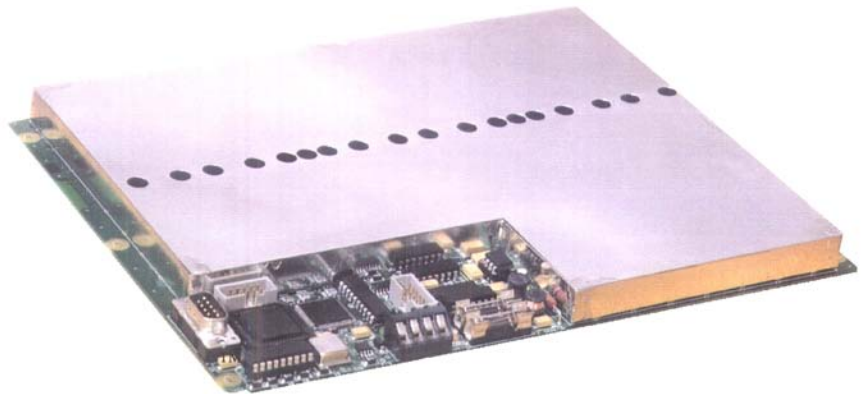
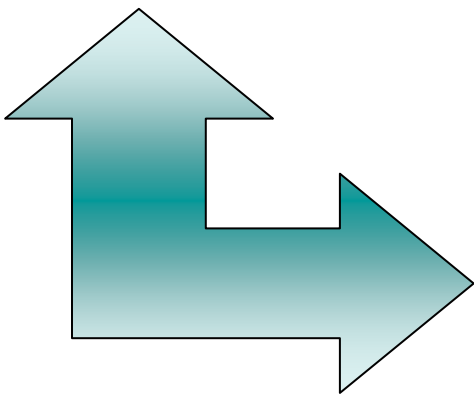
PCMUX3108 H
PCMUX3108 HC
PCMUX3108 HA

**COST EFFECTIVE SOLUTION FOR OEM AND IN-LINE
MULTIPLE CHANNEL UT SYSTEMS**

USPC 3100 MH or MHC or MHA



MUX 8H – 8 CHANNELS



MAIN FEATURES

8 Independent Remote Pulsers, Preamps & Attenuators
Max. PRF : 20KHz ÷ No of Active Channels

- All Settings Fully Independent per Channel
- Optional DAC, Fully Independent per Channel

PCMUX3108HC with High Speed CSCAN Data Acquisition

PCMUX3108HA with High Speed A & CSCAN Data Acquisition

MAIN SPECIFICATIONS

MUX8H - 8 CHANNELS

Remote Pulser : **Square Wave**

- 5ns rise time & decay
- 125/250 Volts Power common to all channels
- 25ns to 1,000ns Width

Max. Pulse Repetition Rate : 20 kHz divided per No of Active channels (up to 8) – w/o DAC Option.

Preamplifier : 12dB

Input Attenuator : 0/15dB

Attenuator : 0/20dB

External Triggers from USPC Card :

- **PRF In** to trigger each channel firing
- **START In** to trigger sequential cycle of Tests

IN/OUTPUT Connectors :

- One TX SMB per channel
- One RX SMB per channel
- One RF SMB for sequential A-Scans Output To USPC Card RX SMB Input
- One RS232 SubD
- One 10-Pin HE10 for external triggers
- Supply 5V. (1 Amp.)/12V. (1Amp.)/Ground

Dimensions : 250x190x20mm (10"x7.6"x8")

Weight : 1.5kg (3.3Lb)

Operating temperature : 0° to 50°C (32° to 122°F)

SOFTWARE

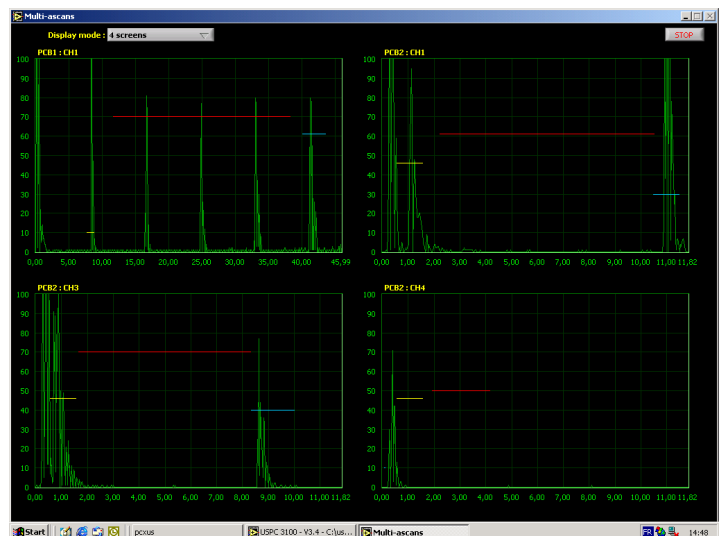
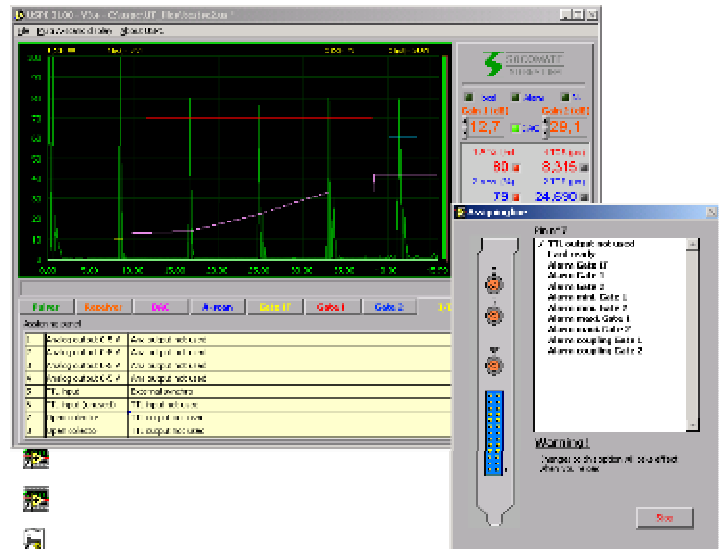
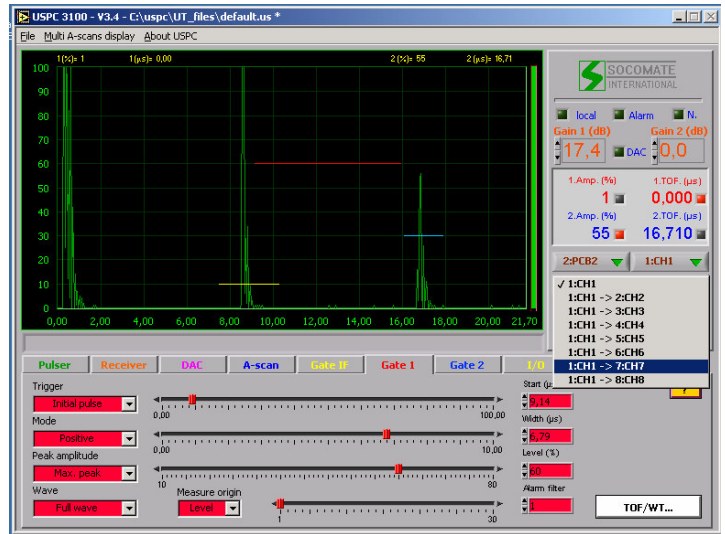
- LabVIEW API Software (Exe. & Source)
- HELP! Tutorial Software

SDK

- DRIVERS for WINDOWS.*
- DLL with Help!
- ACTIVE-X Control with Help!
- LabVIEW ACQ. Software (Exe. & Source) with Help!
- ACQ. Software Samples in VB/VC/Delphi/Borland
- RF Waveform Data ACQ. : Disable

API SOFTWARE

- Standard for all PCI Cards
- One setting Test per Channel
- Selection of active Tests/Channels
- Sequential cycle of Tests : 1/1-2/1-3/1-4/...up to 1-8
- **All Settings Fully Independent per Test**
- **TOF : Enable**
- **W.T. DATA PROCESS : DISABLE**
- **DAC Option :**
PCMUX3108H+/HC+/HA+
- **DAC fully independent per Channel**
- **Max. PRF with DAC :**
13.6kHz ÷ No of Ch.



SOCOMATE maintain the right to modify the specifications of their equipments at any time and in whatever manner, in order to improve their performance

PCMUX3108H-HC-HA-UK-0305-VO

Zone Industrielle – 8, rue des Abbesses – 77580 CRECY LA CHAPELLE - FRANCE

Tel : +33 1 6463 8109 - Fax : +33 1 6463 6021

www.socomate.com - email : contact@socomate.fr