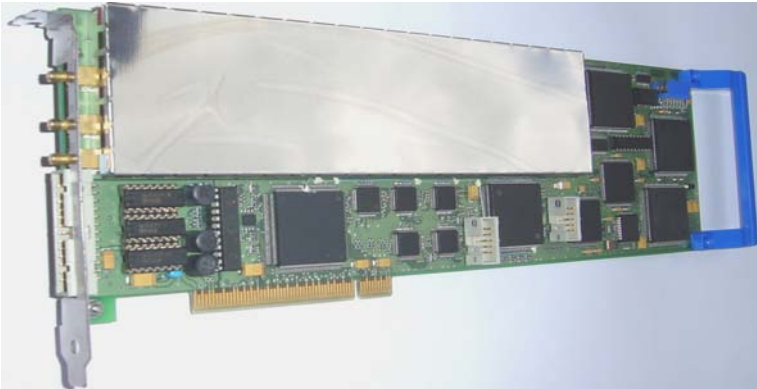


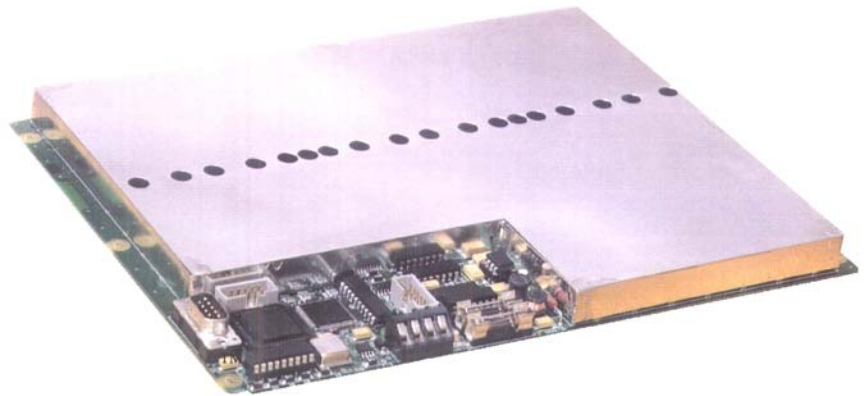
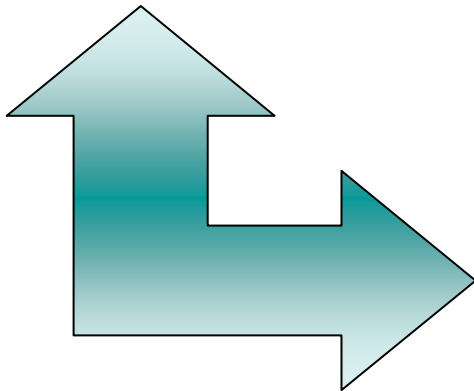
PCMUX3108 B PCMUX3108 BC PCMUX3108 BA

**VERY LOW COST SOLUTION FOR OEM AND IN-LINE
MULTIPLE CHANNEL UT SYSTEMS**

USPC 3100 MB or MBC or MBA



MUX 8B – 8 CHANNELS



MAIN FEATURES

8 Independent Remote Pulsers, Preamps & Attenuators
Max. PRF : 20KHZ ÷ No of active Channels

FULLY INDEPENDENT SETTINGS :

- Main Gain
- DAC Position
- Analogue & Alarm Outputs from USPC3100MB / MBC / MBA
- Gate 1 & 2 Position / Width / Level
- Echo-Gate Trigger in Gate 2

PCMUX3108BC with High Speed CSCAN Data Acquisition

PCMUX3108BA with High Speed A & CSCAN Data Acquisition

MAIN SPECIFICATIONS

MUX8B - 8 CHANNELS

Remote Pulser : Square Wave

- 5ns rise time & decay
- 125/250 Volts Power common to all channels
- 25ns to 1,000ns Width

Max. Pulse Repetition Rate : 20 kHz divided per No of Active channels (up to 8)

Preamplifier : 12dB

Input Attenuator : 0/15dB

Attenuator : 0/20dB

External Triggers from USPC Card :

- **PRF In** to trigger each channel firing
- **START In** to trigger sequential cycle of Tests

IN/OUTPUT Connectors :

- One TX SMB per channel
- One RX SMB per channel
- One RF SMB for sequential A-Scans Output To USPC Card RX SMB Input
- One RS232 SubD
- One 10-Pin HE10 for external triggers
- Supply 5V. (1 Amp.)/12V. (1Amp.)/Ground

Dimensions : 250x190x20mm (10"x7.6"x8")

Weight : 1.5kg (3.3Lb)

Operating temperature : 0° to 50°C (32° to 122°F)

SOFTWARE

- LabVIEW API Software (Exe. & Source)
- HELP! Tutorial Software

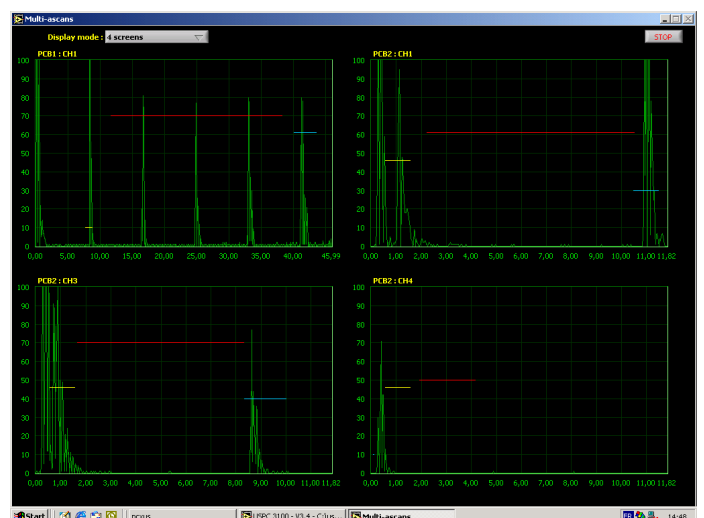
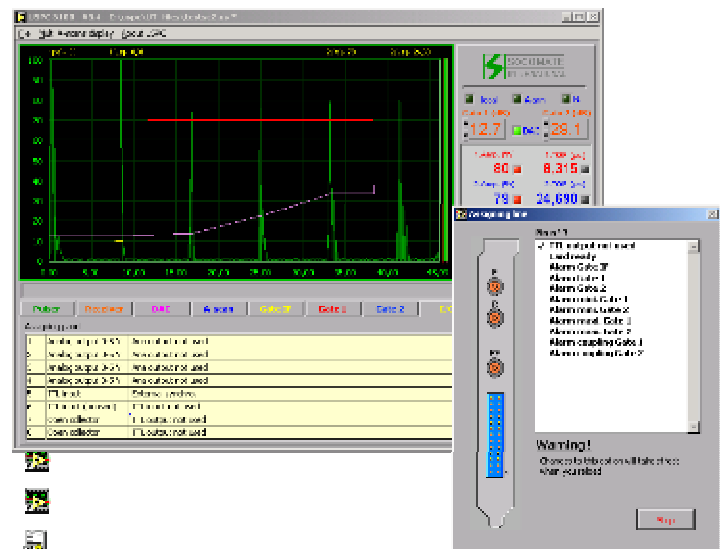
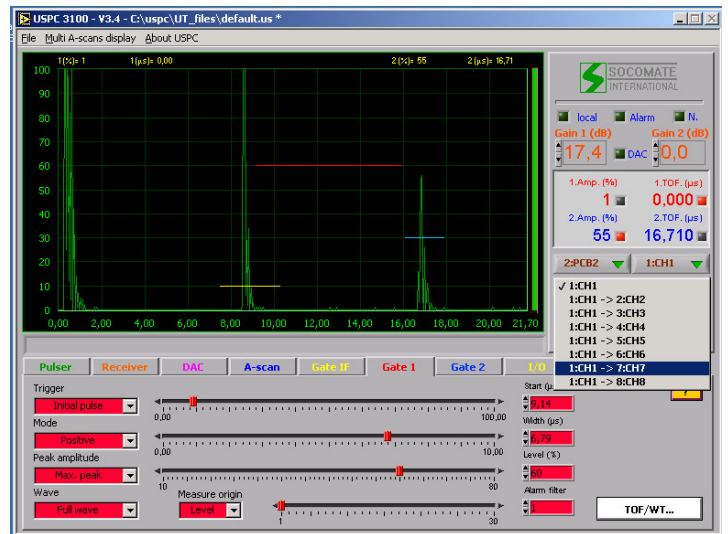
SDK

- DRIVERS for WINDOWS.*
- DLL with Help!
- ACTIVE-X Control with Help!
- LabVIEW ACQ. Software (Exe. & Source) with Help!
- ACQ. Software Samples in VB/VC/Delphi/Borland
- RF Waveform Data ACQ. : Enable

API SOFTWARE

- Standard for all PCI Cards
- One setting Test per Channel
- Selection of active Tests/Channels
- Sequential cycle of Tests : 1/1-2/1-3/1-4/....up to 1-8
- **Settings Fully Independent per Test :**
 - **Main Gain**
 - **Gate 1&2 Position, Width, Level**
 - **DAC Position**
 - **Echo-Gate Trigger in Gate 2**
 - **Analogue & Alarm Go/No-Go Outputs**
- **TOF : Enable**
- **W.T. DATA PROCESS : DISABLE**

ALL OTHER SETTINGS ARE COMMON TO ALL CHANNELS



SOCOMATE maintain the right to modify the specifications of their equipments at any time and in whatever manner, in order to improve their performance

PCMUX3108B-BC-BA-UK-0305-VO

Zone Industrielle – 8, rue des Abbesses – 77580 CRECY LA CHAPELLE – FRANCE

Tel : +33 1 6463 8109 – Fax : +33 1 6463 6021

www.socomate.com - email : contact@socomate.fr