

YOKE REM 230

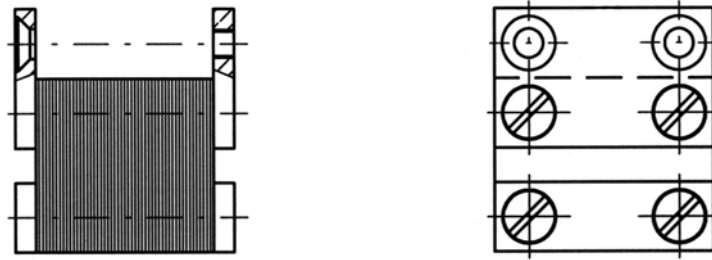
A yoke **REM 230** may be used to magnetize an article longitudinally. If magnetic particles are applied sparingly at the areas between poles, indications of surface discontinuities are easily seen.



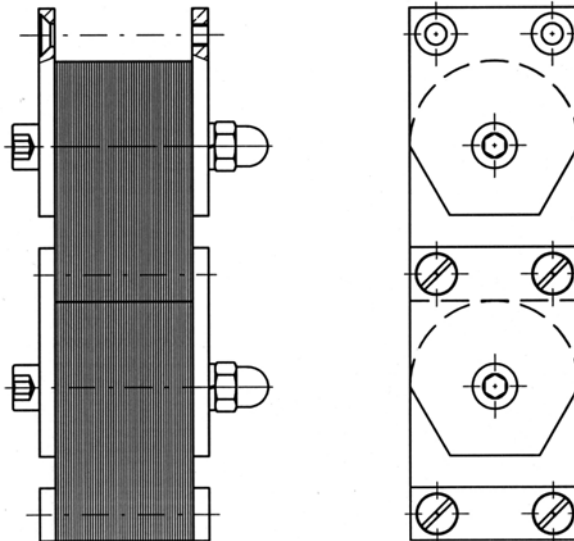
Product compiles with standards:

ASME Code, V. Art 7, ASTM E 709, ASTM E 1444, ASTM E 138 / MIL I6868D, EN 1290, NAVSHIPS 250 - 6373

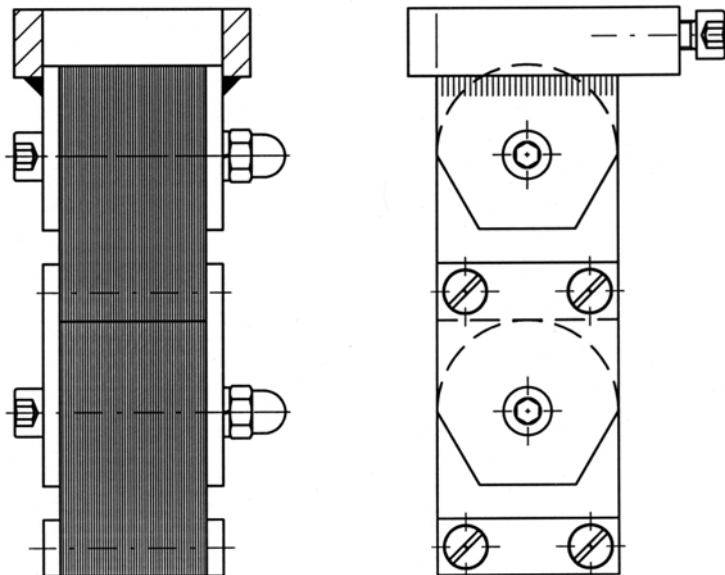
Technical parameters:	
Pole spacing	130 mm
Intensity H - DIN 54131	4,0 kAm ⁻¹
Lifting force	> 12 kg
Load factor	75 % or max. 15 min.
Input	480 / 1000 VA
Supply	230 V / 50 - 60 Hz
Weight	3,6 kg (without cable)



Protective Pole Contact for Yoke REM 230, One Pair, Short, Rigid
 Cat. No. 4808-00-01



Adjustable Pole Contact Legs, One Pair
 Cat. No. 4808-00-02



Quick Mounting Adjustable Pole Contact Legs, One Pair
 Cat. No. 4808-00-03

Cat. No.: 4808-00-04 - **Durable Transport Leather Case for REM Yoke**